

The North American Consortium for Histiocytosis (NACHO) is the first multi-institutional consortium in North America with a solid scientific agenda and the research infrastructure necessary for the development and effective implementation of clinical and translational studies and biological research for histiocytic diseases.

Under the direction of Consortium PI Dr. Carlos Rodriguez-Galindo, NACHO's Operations Center is located at St. Jude Children's Research Hospital. Dr. Carl Allen, Consortium Co-PI, leads the Biology Center at Texas Children's Hospital.

## Consortium Goals and Purpose

### VISION

To understand and cure histiocytic diseases.

### MISSION

To cure all patients with histiocytic diseases and optimize outcomes through innovative and collaborative research.

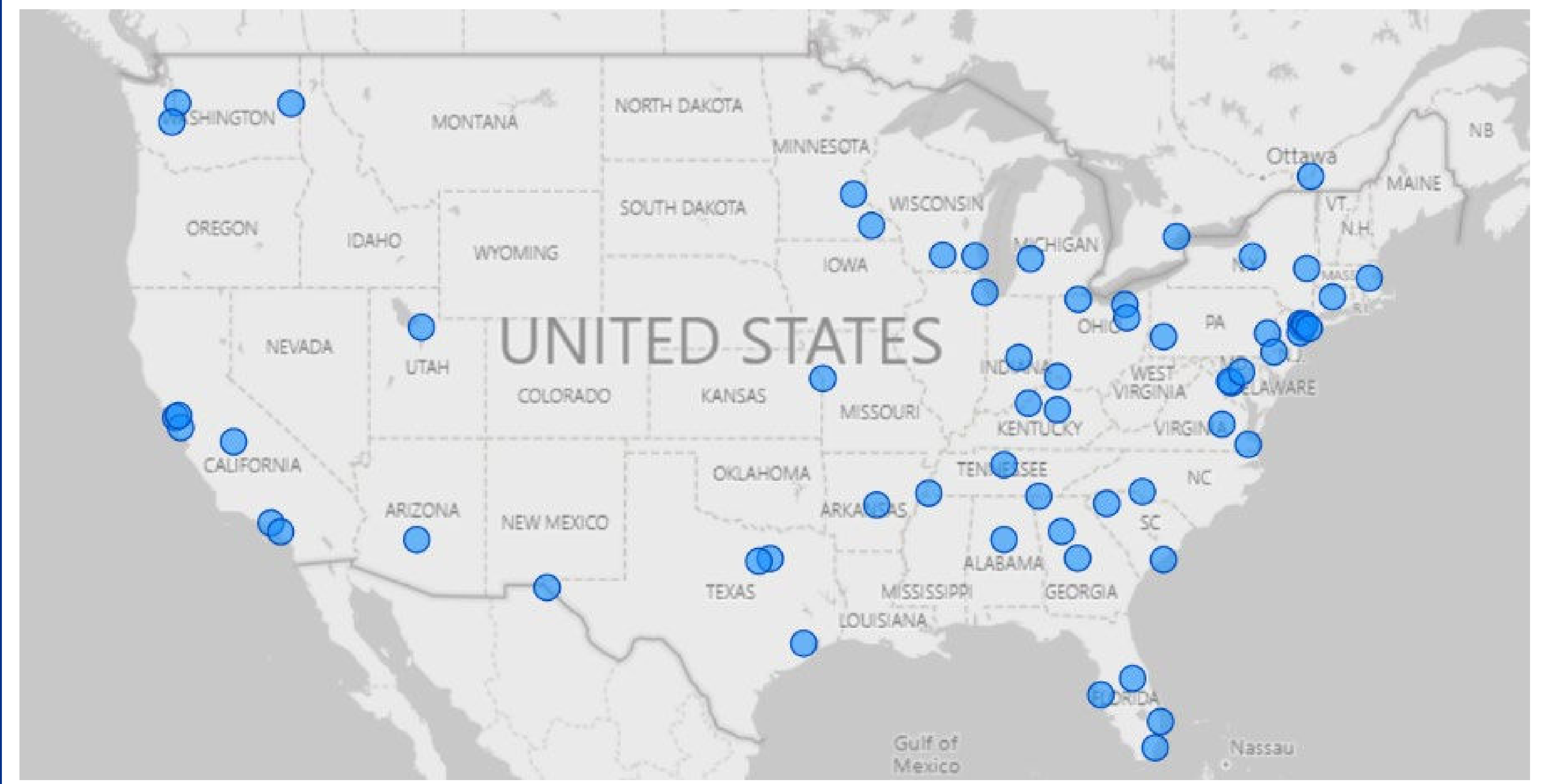
### GOALS

- To develop a network for the advancement of clinical, translational, and basic research in histiocytic diseases.
- To advance therapeutic, etiological and mechanistic research through the implementation of high impact clinical trials and organized collection of well annotated clinical data and biology specimens.
- To define the pathogenesis of histiocytic diseases and develop risk-stratification strategies with tissue samples from patients treated on NACHO trials

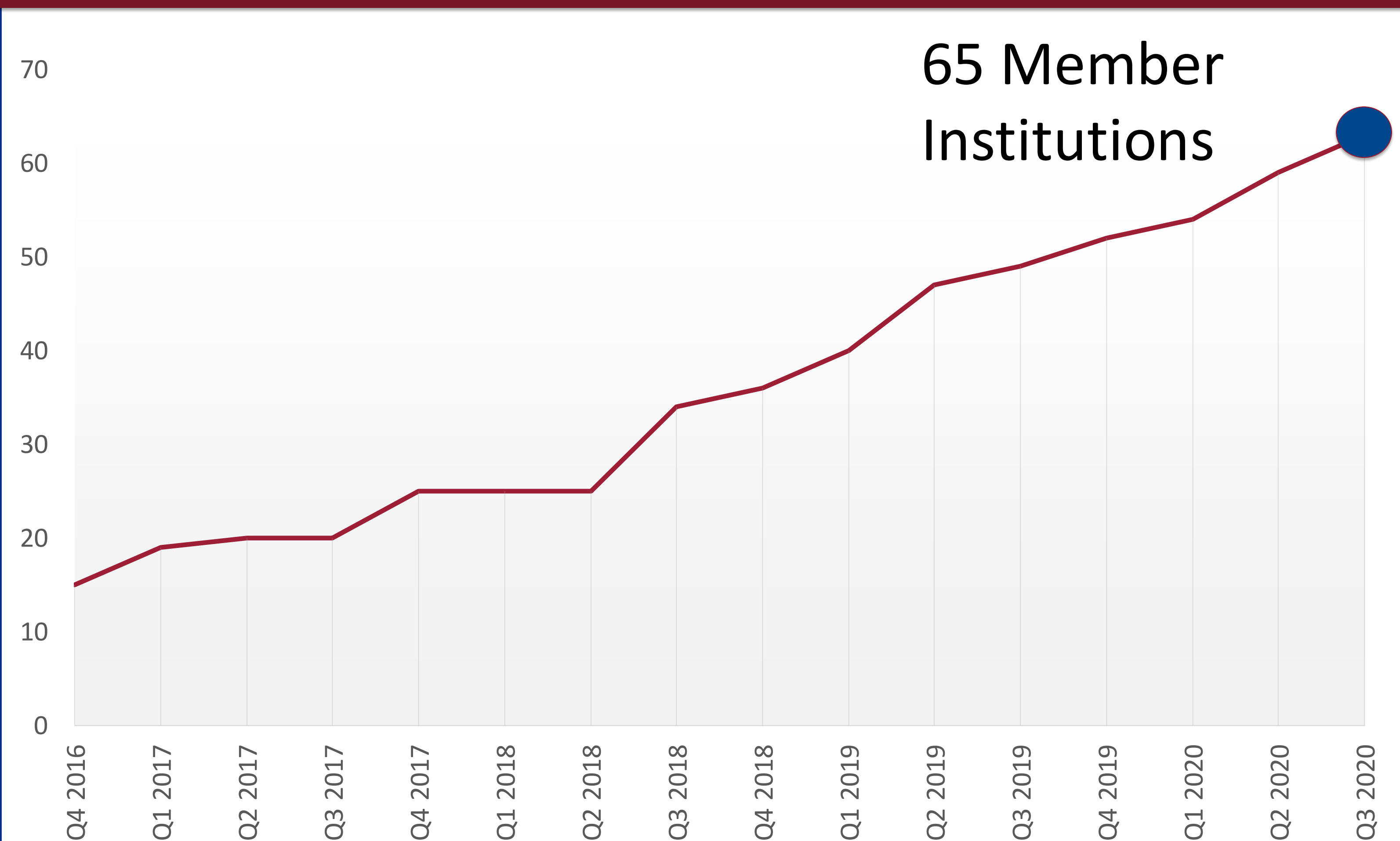
### RESEARCH

NACHO can rapidly design and implement pilot translational research and clinical research initiatives. While many other initiatives will be developed and executed in the future, the collaboration was launched with the implementation of high-impact clinical trials complimented by companion biology studies to facilitate prospective collection of biological samples.

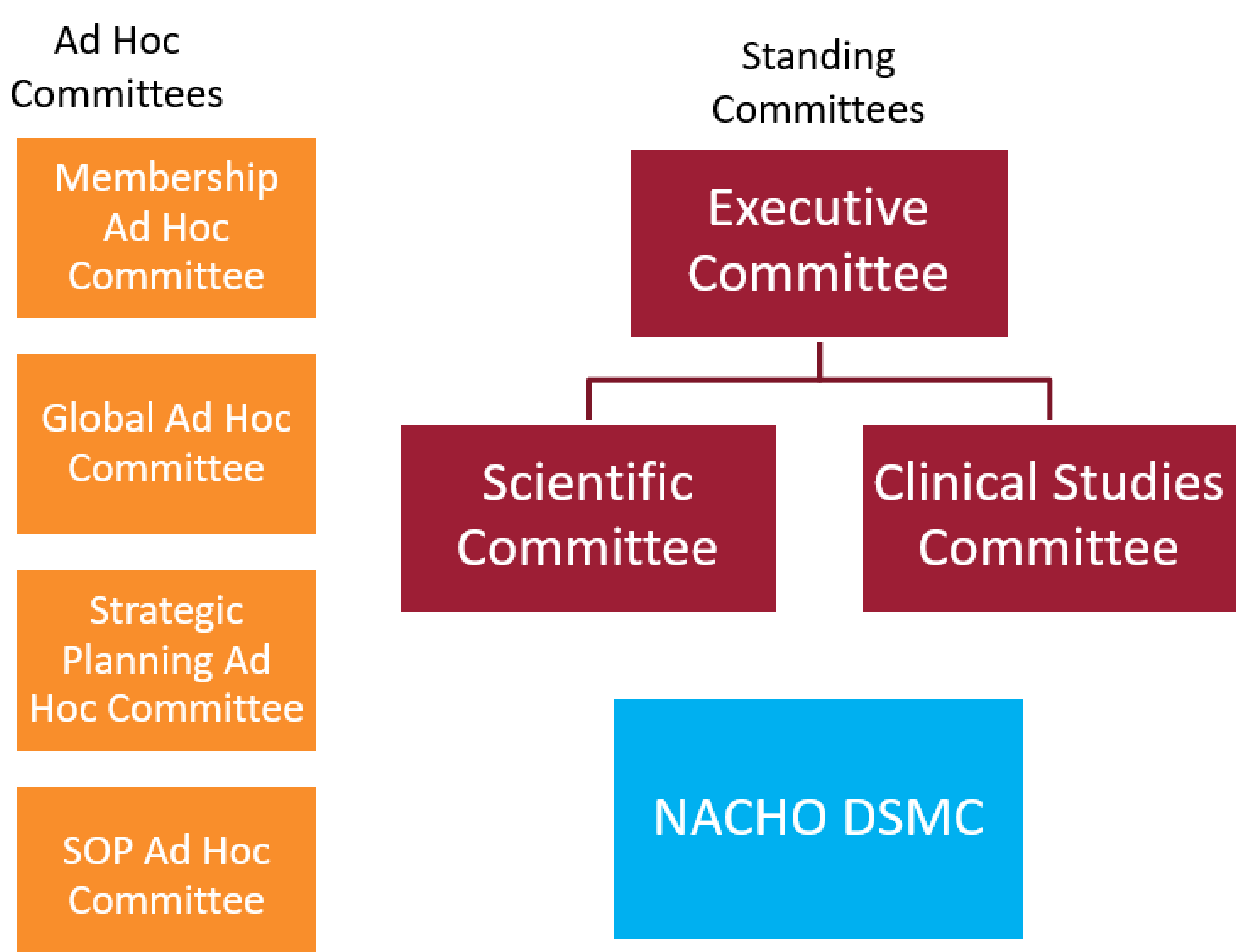
## Current NACHO Members



## NACHO Membership



## NACHO Research and Organization



Study Protocol	PI	Sites Participating	Enrollments	Study Status
NACHO-LIBRE	Carl Allen, MD, PhD	14	21	Completed - Published
LCH-CLO	Barbara Degar, MD	12	23	Closed to Enrollment
LCH-IV <sup>1</sup>	Carlos Rodriguez-Galindo, MD	31	198	Enrolling
NACHO-BIO	Carl Allen, MD, PhD	24	172	Enrolling
NACHO-COBI <sup>2</sup>	Carl Allen, MD, PhD	10	19	Enrolling
HLH-RUXO	Melissa Hines, MD	12	6	Enrolling

<sup>1</sup>With support from Histiocytosis Association  
<sup>2</sup>With support from Leukemia & Lymphoma Society