



2025 IMPACT REPORT

The Histiocytosis Association is powered by the stories of those impacted by histiocytic disorders, by the support and dedication of all who believe in our shared vision of a world free of histiocytosis, and by everyone who generously gives hope, heart, time, ideas, a helping hand, monetary gifts, and other gifts of service and love. **TOGETHER WE DRIVE PROGRESS AND ADVANCE RESEARCH** to one day cure all histiocytic disorders. **THANK YOU** for making this year's progress possible.

Table of Contents

Letter From Our Executive Director -----	Page 3
Our Mission-----	Page 4
The Power of Community -----	Page 5
Education and Connection -----	Page 6
Research Advancements -----	Page 7
2025 Grant Awardees -----	Page 8
Awareness Activities -----	Page 12
Where Our Support Comes From-----	Page 14
Donor Lists -----	Page 15
Sponsors/Grants/General/Tribute Gifts/Workplace Giving	
Monthly Donors and Community Fundraising Events	
Board and Staff -----	Page 23

Letter from our Executive Director

Dear Histo Community,

As we look back on 2025, I am filled with gratitude for the strength, generosity, and unity that continue to define our global Histo family. It was a year of meaningful transition and tremendous momentum for the Histiocytosis Association. One marked by powerful connections, community leadership, and renewed commitment to our mission.



In August, I had the privilege of stepping into the role of Executive Director. From my first day, I was welcomed with openness and passion by patients, families, researchers, clinicians, volunteers, and partners around the world. Your stories, insights, and unwavering resilience guide every step we take.

One of the year's most significant moments was gathering together for the Patient & Family Summit in Seattle. The energy, collaboration, and hope shared during that event reminded us why our work matters so deeply and how essential it is to create spaces where our community can *learn, connect, and heal together*.

Throughout the year, countless individuals and families also stepped forward to fundraise, host awareness events, and champion our mission in their local communities. From runs and hikes to memorial campaigns, birthday fundraisers, and creative grassroots efforts, your actions brought critical support to research, education, and patient programs. Each effort - *large or small* - became a powerful expression of hope and solidarity.

In this Impact Report, you will see the results of these collective efforts: advancements in research funding, strengthened partnerships, expanded resources for patients and families, and the ongoing growth of a global network committed to improving the lives of those affected by histiocytic disorders.

Now in our 40th anniversary year, we move forward with gratitude for how far we've come, clarity about where we are headed, and confidence that together, we will continue to advance hope and drive meaningful change.

With appreciation and hope,

A handwritten signature in cursive script, appearing to read 'Jen Silvers'.

Jen Silvers
Executive Director

Together with Our Rare Community



The [Histiocytosis Association](#) is a global nonprofit organization, based in Pitman, New Jersey, that is dedicated to addressing the unique needs of patients, families, and physicians impacted by histiocytic disorders. Histiocytic disorders are a group of diseases that occur when there is an over-production of white blood cells known as histiocytes that can lead to organ damage and tumor formation. Some histiocytic disorders are classified as rare cancers.

The [Association](#) was founded in 1986 when Jeff and Sally Toughill's daughter was diagnosed with Langerhans cell histiocytosis; their family found themselves left with insufficient information, no support network of doctors or patients, and no clear idea of where to turn next. As a result of that experience, and in the hopes of helping other patients and parents in the future, the Toughills launched the [Histiocytosis Association](#). The [Association](#) is regarded as a world-wide leader and a respected authority within the medical and patient communities for its commitment to funding cutting-edge research and providing support for families and patients.

[Histio.org](#) is the go-to online source for patients, families, and medical professionals to find critical information on each histiocytic disorder and related resources including educational content, a histiocytosis resource directory, peer support programs, and a physician finder directory.

In addition, the [Association](#) has a unique partnership with an international medical professional organization, the Histiocyte Society, and has served as Secretariat for the Society for nearly 40-years. This partnership, along with strong connections across many rare cancer, rare disease, and other similar organizations, allows the [Association](#) to maintain a current and future thinking perspective on accomplishing our vision for a world free of histiocytic disorders.

Our Impact

19,500

strong in our community of patients, families, physicians and researchers, representing 119 countries and growing.

\$8.1M

in research grants that are resulting in fewer patient fatalities and more effective treatments.

13,395

subscribe to our YouTube channel and/or follow us on social media including Facebook and Instagram.

360

physicians from 59 countries are a part of our directory that provides patients around the world access to experienced clinicians.

286

physicians and researchers gather to share knowledge through the Histiocyte Society, our partner organization for nearly 40 years.

1,600+

patients, family members, and physicians globally, engaged with us through online educational talks since 2020.

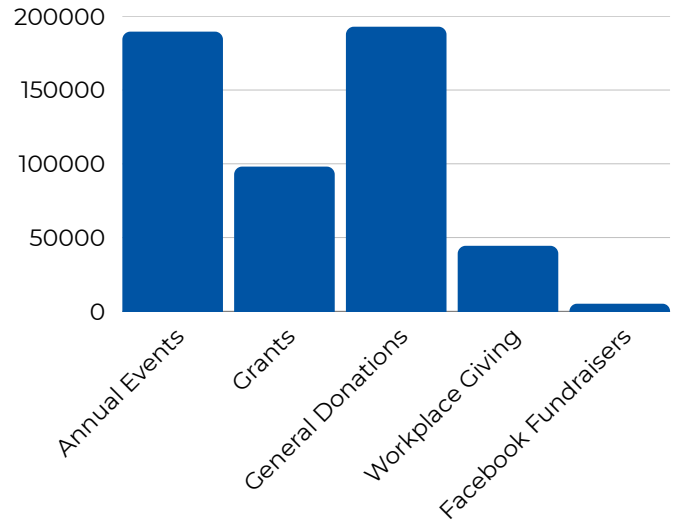
The Power of Community

At the heart of our mission is the steadfast support of our community. Your generosity drives groundbreaking research, sustains vital programs, and ensures patients and families have access to expert education, peer support, and compassionate resources.

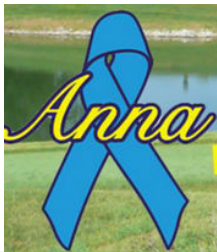
Total Raised by the Community

\$530,423

- Annual Community-Led Events - \$189,551
- Grants - \$98,106
- General Donations - \$193,191
- Workplace Giving/United Way - \$44,418
- Facebook Fundraisers - \$5,157



Whether organizing a bake sale, hosting a walk/run or golf outing, or simply participating in one, your efforts shine brightly. Through personal donations, workplace giving campaigns, and other acts of generosity, **YOU** make a profound impact, fueling hope and transforming lives within the Histio Community.



ANNA MEMORIAL

MIGHTY MILES' LEMONADE STAND



HISTIO TY-FIGHTER 5K



BREATHE AND BELIEVE



HISTIO HIKE - SHENANDOAH



BOOK FUNDRAISER

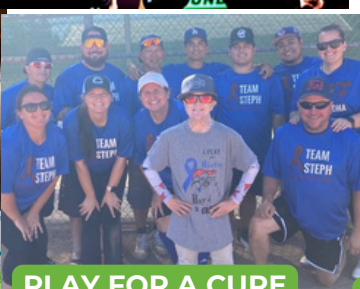
HAYMAKERS FOR HOPE



HLH AWARENESS GOLF OUTING



COMMUNITY SILENT ART AUCTION



PLAY FOR A CURE



JEFFREY WHITE RUN/WALK



BLUE RIBBON RUN

Education & Connection

BEYOND THE DIAGNOSIS PODCAST

An educational resource, delivering timely, relevant health and lifestyle information while exploring topics that go “*beyond the diagnosis.*”

4259
all time
listens in **51**
countries

PEER SUPPORT

Held online, these hour-long sessions create a safe space for patients and family members to share and connect.

12
sessions in 2025

GRIEF SUPPORT

Moderated by a professional grief counselor; they offer a safe space to connect following the loss of a spouse or child.

10
sessions in 2025

HISTIO PATIENT & FAMILY EDUCATION MEETING

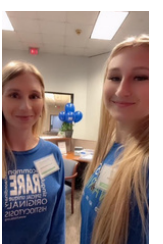
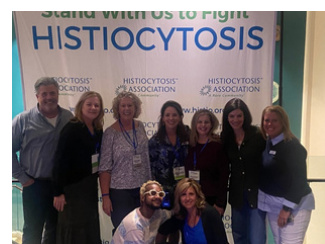
9 travel scholarships
were awarded for a
total of **\$5,050**



Educational opportunities are essential to empowering the histiocytosis community. In-person meetings provide a meaningful space for patients and families to connect, share experiences, and learn directly from expert clinicians and researchers. These gatherings reduce isolation, strengthen community bonds, and ensure access to the latest information on treatment, research, and supportive care.

In **January 2025**, we hosted a **regional education meeting** in Houston, Texas in partnership with Texas Children's Hospital. This gathering brought together patients and families from the local region and beyond, featuring five expert guest speakers who presented on each of the histiocytic disorders and provided critical, up-to-date disease education.

In **September**, we welcomed families to Seattle, Washington for the **Histio Patient and Family Summit**. Over two inspiring days, attendees learned from leading experts, participated in interactive workshops on topics such as genomic profiling and clinical trials, and built meaningful connections within the histio community. The Summit strengthened advocacy, fostered support, and reinforced our shared commitment to advancing care and hope for all those affected.



Continuing Medical Education (CME)

Refining Patient-Centered Care for Hemophagocytic Lymphohistiocytosis (HLH)

This year, thanks to an educational grant from Sobi, we were able to partner with NORD and Medlive CME to create a Continuing Medical Education Session on patient-centered care for HLH. This session featured HLH experts Dr. Michael B. Jordan, Dr. Peter Nigrovic, and Dr. Pui Lee and three HLH patients/family representatives sharing their firsthand experiences.

5,096

Clinician
Learners

175

CME Participants



medlive
CME

Research

Since 1992, the Histiocytosis Association has funded **220** research grants to investigators from around the world, totaling over **\$8 million**.

Research Grant Program

The number of grants awarded during our annual funding cycle varies each year. It is determined by a variety of factors including, *but not limited to*, the quality of eligible applications received and the availability of funds.

19 grant applications
received in 2025

2025 Grant Awardees



Read more about the grants on the next page



Joseph Ingrassia,
Long time friend,
supporter and
Histiocytosis
Association
board member

The Early Career Scholarship fosters collaboration and learning among early-career investigators, ensuring the future of histiocytosis research - an enduring tribute to Joseph Ingrassia's commitment to progress.

In 2025, **3** scholarships were awarded for a **total of \$2,000**.

The recipients in 2025, were **Francesco Pegoraro**, University of Florence, Italy; **Isabella Sales de Macedo**, Universidade Federal da Bahia, Brazil; and **Irena Ungureanu**, Ambroise-Paré Hospital, France.

Mechanism of Interferon Gamma Induced Liver Sinusoidal Endothelial Cell Disruption in Familial Hemophagocytic Lymphohistiocytosis Hepatitis



Principal Investigator:
Tamir Diamond
Children's Hospital of Philadelphia
Philadelphia, PA USA

Amount of Award:
\$51,000
(Founder's Grant and
Toughill Prize)

This project's goal is to improve care for children suffering from hemophagocytic lymphohistiocytosis (HLH) liver failure. This is a common cause of acute liver failure in children under the age of 2. One of the main mediators of disease in HLH is a small protein called interferon gamma (IFN γ). IFN γ helps clear viruses and protect you from cancer at normal levels. However, when levels are too high, as in HLH, it can cause a patient to be very sick. We know that the liver in HLH responds strongly to IFN γ and that in mice IFN γ causes injury to the lining of the little blood vessels in the liver called liver sinusoidal endothelial cells (LSEC). However, we don't know entirely why the LSEC get injured and how this cell type contributes to liver failure. In this project we will start answering this question by using a mouse model of HLH that has LSEC that don't respond to IFN γ . We will do experiments studying how this may protect mice from liver injury but also how the LSEC interact with the immune cells using a new technology call spatial transcriptomics. These experiments will help us understand the role of LSEC response to IFN γ . With that information we may be able to choose drugs that may be helpful for patients with HLH liver failure to prevent their need for liver transplant.

Evaluation of the Bromodomain and Extra Terminal (BET) Domain Activity as an actionable Target in Hemophagocytic Lymphohistiocytosis (HLH)



Principal Investigator:
Polina Shindiapina
The Ohio State University
Ohio, USA

Amount of Award:
\$50,000

Hemophagocytic lymphohistiocytosis/macrophage activation syndrome, also known as HLH/MAS, is a rare but often fatal disease in adults. Normally, our immune system responds to infections or to cancer by killing the offending infection or destroying cancer cells. In HLH/MAS, the immune response to a stimulus such as infection or cancer does not work correctly and becomes overwhelming. This overwhelming immune activation can lead to organ damage and even death. Currently we do not have many effective therapies to treat HLH, and up to one half of adult patients with HLH can die despite treatment with approved therapies. Therefore, the discovery of new therapies is urgently needed.

The bromodomain and extra terminal domain (BET) proteins have emerged as regulators of inflammation and immune responses. Dr. Shindiapina and Dr. Ranganathan at the Ohio State University performed preliminary experiments that suggested that selective inhibition of BET activity in the mouse model of secondary HLH/MAS appeared effective in treating the disease. We propose to validate these results and to study the function of BET activity in the mouse model of HLH/MAS in more detail. BET inhibitors have been tested and well tolerated in human clinical trials treating patients with cancer and inflammation of graft-versus-host disease. We hope that the data acquired in the experiments described in this proposal will lead us to perform clinical trials of drugs that block BET activity and may therefore treat human patients with HLH.

Mapping the Spatial Heterogeneity and Ontogeny of Pathogenic Dendritic Cells in Langerhans Cell Histiocytosis



Principal Investigator:

Florent Ginhoux

Gustave Roussy

Villejuif, France

Amount of Award:

\$50,000

This project was made possible in partnership with the Histiocytosis Association of Canada (HAC).

This project focuses on Langerhans Cell Histiocytosis (LCH), a rare disease in which abnormal immune cells build up in tissues and cause damage. These cells are known to carry specific markers (CD1a and CD207) and often contain a mutation called BRAF V600E. However, we still don't fully understand where these abnormal cells come from, what causes them to behave the way they do, and how they are organized within affected tissues.

Our project aims to study the exact location and types of immune cells, especially the harmful ones, inside the tissue lesions found in LCH. We are particularly interested in how these mutated cells differ in their positioning and interaction with other immune cells. Interestingly, our previous research found similar abnormal immune cells in lung tumors, suggesting there may be a shared process driving both diseases. In this study, we will compare LCH lesions to lung tumor samples to uncover common patterns.

To do this, we will use cutting-edge technology to look at gene activity, genetic mutations, and protein patterns within the tissue itself, while preserving their original location in the tissue. These tools (called Xenium, Visium HD, and MACSIMA) help us map what's happening at a very detailed level, giving us a 3D picture of how these cells interact. This project is directly relevant to histiocytic disorders because it addresses one of the biggest unknowns in LCH: how the disease starts and spreads. By understanding the early stages and environment of LCH, we can find better ways to diagnose and treat it. Patients with LCH could benefit in several ways. Our research could lead to the discovery of new biomarkers making diagnosis easier and earlier. These biomarkers could also help doctors monitor how well treatments are working or point to new, more effective therapies. Ultimately, this work could bring real progress in the care and outcomes of people living with LCH.

Deciphering neurodegeneration in LCH



Principal Investigator:
Raphaela Schwentner
St. Anna Children's Cancer
Research Institute
Vienna, Austria

Amount of Award:
\$50,000

Langerhans cell histiocytosis (LCH) is a rare disease that mostly affects children. It is a disease that is based on mutations in a specific signaling pathway, the MAPK pathway. In 50-60% of cases a single mutation, called BRAFV600E, is the cause of the disease. LCH can range from a mild illness affecting only one area of the body to a serious condition that impacts multiple organs and requires strong treatment. Most children survive, but some develop long-term problems, especially brain-related damage called neurodegeneration.

Recent research shows that certain mutated cells may be responsible for this brain damage. These cells can get into the brain, where they may harm nerve cells—even after the initial treatment seems to work.

In our recent study, we created lab-grown versions of these mutated brain immune cells (called iMicroglia) and nerve cells (iNeurons). We found that the mutated iMicroglia damage the iNeurons and cause them to release neurofilament light, which is a specific marker that signals brain injury.

In this project, we want to better understand how these mutated cells cause damage in the brain. We're especially interested in how they interact with neurons and which harmful factors they might release to destroy the neurons. We will also perform drug screenings using our cell model to find new drug candidates.

Another part of our research involves creating a special zebrafish model of LCH. These fish are transparent, so we can watch how the disease develops in real time. We will label normal and mutated cells with a fluorescent marker, which lets us track them under a microscope. In the future, this zebrafish model will also help us test many different drugs at a time to find ones that might work as treatments.

If this project is successful, we will have a better understanding of how neurodegeneration in LCH works and thereby will find new treatment options to not only get patients with LCH into remission but also save them from devastating long-term complications.

Awareness Activities

Histio Ambassador Program

Histio ambassadors are dedicated to spreading awareness and making a difference year-round through a variety of creative and impactful efforts. Whether hosting fundraising events, sharing powerful messages on social media, or speaking directly to their communities, they work tirelessly to inspire action and build support for our cause. Their passion and commitment shine through in everything they do.



In 2025, we welcomed **4 Ambassadors**

to our team of dedicated volunteer ambassadors. In 2025 we had **23 Ambassadors** and **2 youth ambassadors** actively supporting our mission and the Histio Community.

Ambassador Initiative: Identifying Care Deserts *(Click on the poster image to enlarge)*

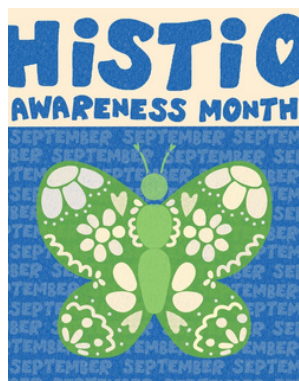


For the second consecutive year, and continuing their commitment to raising awareness, the Ambassadors featured their Care Deserts poster at key events throughout the year, including the World Orphan Drug Congress in Boston, Rare Disease Day at UCI in Orange, CA, and the NORD Breakthrough Summit in Washington, DC.



Awareness Month

September was a month of awareness, advocacy, and meaningful connection. Patients and families courageously shared their personal stories, championed greater recognition of our rare disease, and united in person at the Patient and Family Summit in Seattle. Throughout the month, we also proudly featured an awareness poster designed by Riley Ordonez (Histio Sibling), helping amplify our message and bring greater visibility to our community.



Scholarship Program

7th Annual Histo Student Scholarship

In 2025, we had **28 applicants**, **5 winners** and awarded a **total of \$8,843 in scholarship funds**. We have now funded **over \$50,000** toward undergraduate education for histio patients and families since the program's start in 2019.

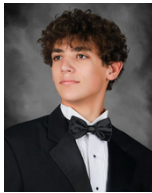


HISTIO STUDENT SCHOLARSHIP PROGRAM

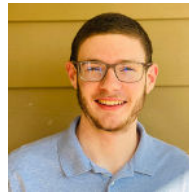
2025 Recipients



Isana Alicea



Charles Resnick



Brady Williamson



Zoe Zwald



Jonah Chuang

Reach on Social Media

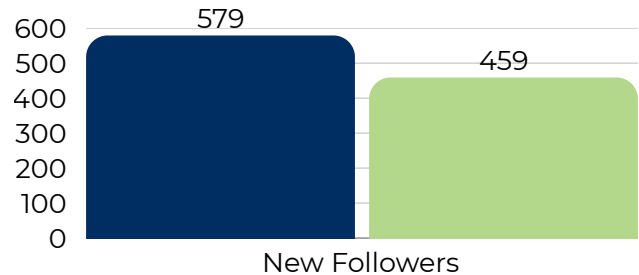
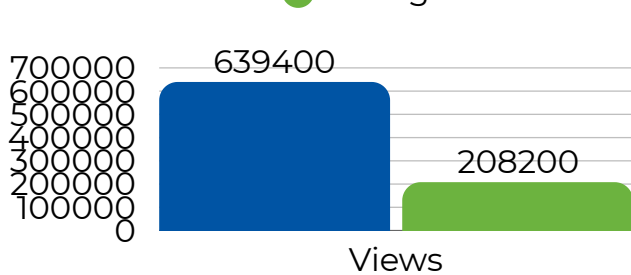
By sharing stories and information on social media, and engaging partners around the world, we continue to grow our reach. **This expanded reach helps raise awareness within and beyond the histiocytosis community!**

● Facebook

● Instagram

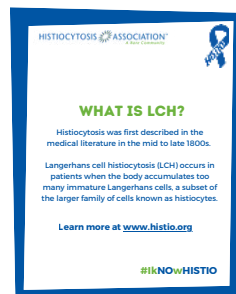
● Facebook

● Instagram



Community Insights

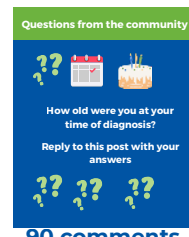
Social media continues to expand our reach and deepen our connection with the community. In 2025, we introduced a new recurring content series **Questions from the Community**, and expanded our existing series of **Histo Story Highlights**, and **"I Know Histo"** posts. These series sparked meaningful engagement and conversation. Most importantly, they gave us valuable insight into the evolving needs of our community - allowing us to listen more closely and respond more intentionally.



59,164 views
708 Interactions
8 New Followers



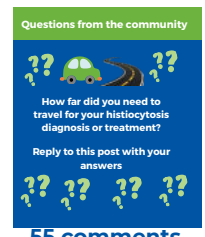
10.2K Views
79 Interactions



90 comments



11.2K Views
215 Interactions



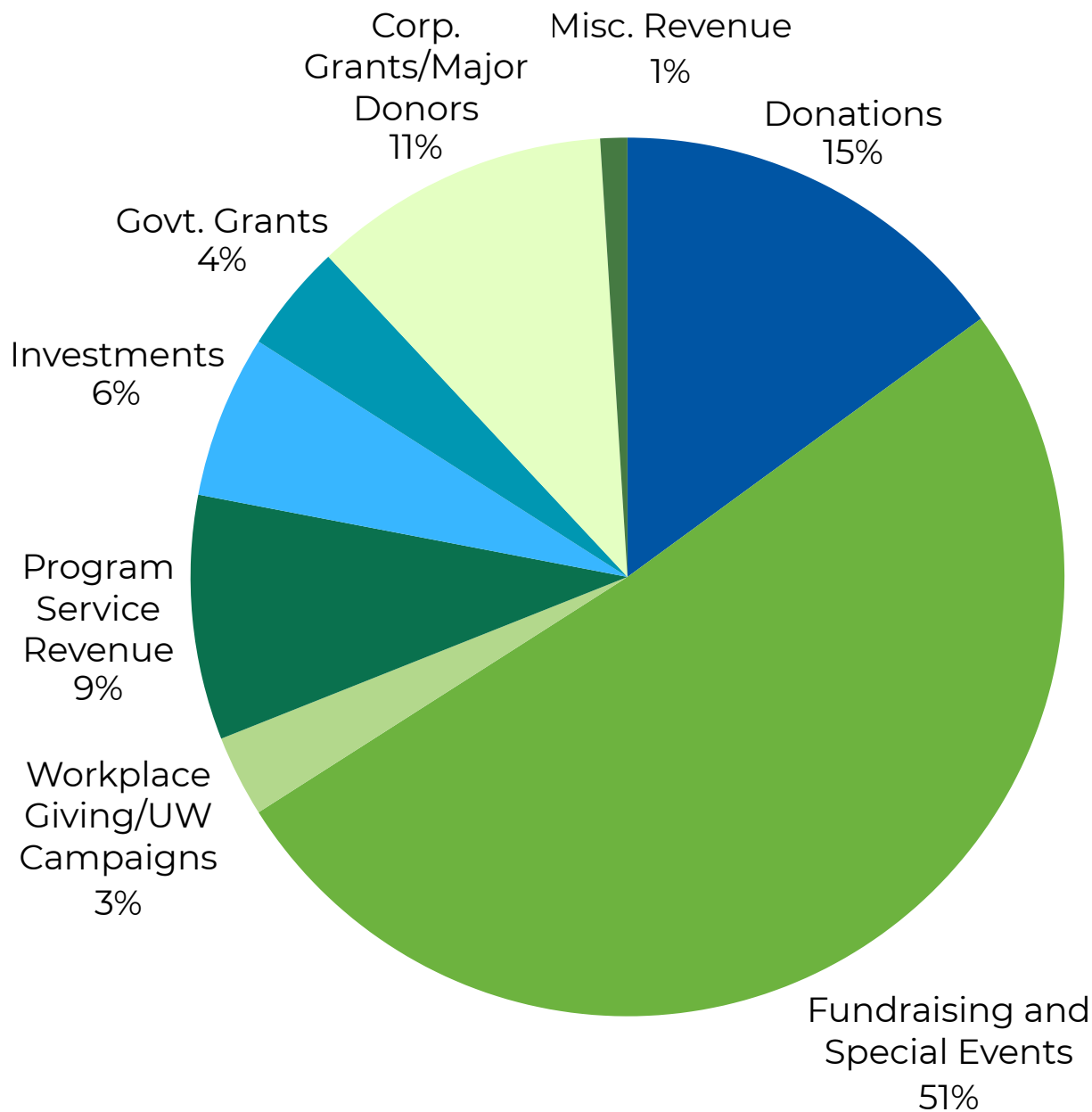
55 comments

Where Our Support Comes From

This at-a-glance snapshot shows the diverse sources of support that sustain our work. Although the figures are based on preliminary, unaudited financials, they highlight the vital role our community plays in advancing our mission.

SOURCES OF INCOME

Total Revenue: **\$1,307,761**



The Histiocytosis Association continues to demonstrate strong stewardship and accountability in support of our community. In recognition of this commitment, we've earned high ratings from leading charity watchdog organizations, including Candid and Charity Navigator. These distinctions reflect our dedication to transparency, financial responsibility, and maximizing the impact of every dollar raised to advance research, education, and patient support.



With Gratitude to Our Supporters

We are deeply grateful to our generous donors and event hosts - your support fuels our mission and makes our programs possible. Thanks to you, we can provide educational opportunities and resources, raise awareness through outreach, and fund critical research that advances care and understanding.

Every contribution, big or small, makes a meaningful difference in the lives of the patients and families we serve. We are honored to have your partnership and can't thank you enough for helping us make an impact.

CORPORATE SPONSORS



\$10,000+

Carole Cummings
The Davis/Dauray Family Fund
Karen Dial/The Drollinger
Family Charitable Foundation
Tony Gong
Hugh and Shana Griffiths
Carolyn Miller
Rebecca Trowbridge

\$5,000 - \$9,999

William and Tara Blair
FirstBank Charitable Foundation, Inc.
James Hassan
Chad and Jessica Hemond +
Huneycutt Family Foundation
Navneet Singh
Veach Family Charitable Gift Fund

\$2,500 - \$4,999

David Bradley
Joe and Tammi Cummings
Steven and Mary Gagnon
Rotary Club of Altoona
Craig Naylor
Rick Phillips
Darcie Sander
Alan Scolamieri and Misty Colwell *
Stanley Sidel

\$1,000 - \$2,499

Barry and Melinda Atnip
Lawrence and Andrea Augustine
Matt and Sara Baird
Ronnel Balliet +
Suzanne Blowers
Elizabeth Blowers-Nyman
Angie Bong
Richard and Christine Brezski
Kelsey Cheek +
Harrison Cummings-Thomas
Nicole Curran
Eli Diamond
Mark Fisher
Jessica Franco +
Sharon Guadagnola
Hemenway & Barnes LLP
Paul Hendrie
Henry Heren *
Charles and Susan Konieczny
Pamela Kurtz +
Stephan Ladisch
Matthew and Renee LaFountain
KP Lau
Andrew Mahler
Marion Matlock
Robert and Lori Maynard
Kathleen McKie
Timothy Morder
Jack and Karen Pacheco
Percent Impact Foundation +

\$1,000 - \$2,499

Stephen and Louise Renneckar
Gregory Rocque
Jamie Rivette +
Samuel's Bumblebee Blessings
Endowment Fund
Lance and Susan Smith
Diane Thornbery
**Thrivent Financial for
Lutherans' Foundation +**
Susan Wenner
S. Gray and Marian Whetstone
Steven and Sheila Wolf

\$500 - \$999

Gregory Baker/Baker Family Fund
Tracy Brown
Timothy and Kristine Butz
Nathaniel Chuang
Jonathan and Kathleen Cohen
Martin and Karen Cohen
John Cordes
Peter and Stephanie Crist
Ralph and Karleen Dude
Philip and Cindy Feder
Rick and Julie Forzano
Michael Freeman *
Brian Gillin +
Leonard and Linda Golding
The Glen and Gwen Heys Fund
Laura Jaeger
David and Annette Kelter

\$500 - \$999

William Kerwin
Jennifer Khorey
Lynn and Darlene Lamb
Ryan and Margaret Lax
Peter and Noelle Locke
David Long
Sydney Martin Rutstein
Terrence Nesensohn +
Benjamin Owens
Ashley Palmer
Matt and Aleeza Reichel
Gary and Victoria Schar
Eric Schlesinger
Colleen Sheehy
Bridget Shingler +
Kimo and Christy Stine
Lara Theriault
Jana Thomas *
Surendra Vaidya
Maria Watson +
Patrick Wheeler
Holly Wicketts *
Sarah Yeary

\$250 - \$499

Carolyn Anderson
Shaun Anderson
Joseph and Anne Baki
Elizabeth Barton
Baco Chenawah
Bazaar Foundation
Isabel Bratter
Michael Broman
Ted Cabel *
Anne Cajigas
June Campbell
Angelica Castillo
Jon Coker
Bradley Comp
Brian and Amy Cummings *
Syeachia Dennis
Miriam DiJohn
Dwight Eng
James Erbele +
Brian and Julie Fisher
Deanna Fournier *
Michael and Annette Gallo
Jim and Leisa Greathouse *
Thomas Hagerty
Jason and Gina Hopp
Carol James
Michael Kaline
Claudia Marquez
Bradley and Tracy Martin
Marilyn Mastrella
Alicia Mazurek
Karen Messina

\$250 - \$499

Nicole Millet
Wayne and Virginia Nelsen
Linda Pistorio
Cathleen Plaut
Edward and Jeanne Polan
BJ Radhe
Matt Reichel
Jacquie and Michael Resnick
Harold Roth
Mollie Sanderson
Greg Scharpf
Frederick and Tracy Seeba
Maryanne Senna
Frank and Joann Spadaro
St Paul's Evangelical Lutheran Church
Betty Thomas
Joseph Tiller
James Wertheimer
Denise Widener
United Way of Gloucester County +
Yuping Zeng *

\$1 - \$249

Phil and Debbie Aaron
Janet Ahern
Mustafa and Barbara Akl
Marisel Alago
Alaska Airlines +
Attea Alexander
Amboy
Brittany Ames
Katherine Anderson
Lynn Applegate *
Gayle Argenzio
Carla Ash
AT&T Employee +
Giving Campaign
Bruce and Sandra Baird
Scott Baker
Stephen and Lynn Bamdas
The Batten Group
Nancy Baxter and Robert Stone
Kathleen Beaulieu
Luthur and Margaret Beazley
Bellevue Golf Club
Joanne Benoit
Gaylene Benzel
Annie Bessette
Diane Biondo
Pam Bishop +
Denise and Bob Bonemeyer
Jessica Bonilla
Tamara Bothwell +
Susan Bowen
Debbe Brady

\$1 - \$249

Mike and Kathy Bravard
Karen Bressler
David and Christine Breuss
Christopher Briggs
Richard Broderick
William Brown
Diane Bruce
Mary Burke
Sophia Burt
Emily Cajigas
Mozella Callier
Richard and Anne Camillieri
John and Christine Carlsten
Yvette Carrier
Diane Castino
James Chain
Judith Cirillo
Robert and Doreen Clerc
Jaimee Clerc
The Clorox Company +
Foundation
Cameo Coleman
Betsy and Bob Coll
Xoana Colon
John and Judith Combs
Richard and Suzanne Conaboy
Sita Conde
Edward Cooper
Linda Correia
Jason and Kristina Couden
Eleanor Crohan
Carol Cuccia
Mary Currie
Mary Darr
Pam Davis
Jim Davis
Nancy Davis
Michelle De Re
Debby Dear
Joyce DeGeorge
Meryl Dell Italia
Reid and Barbara Delphey
Susan DiNicola
Jennifer DeWeese
Jason Dolder
Daniel Donohue
Marsha Dorgan
Charles and Rebecca Dowd
Cathy Doyle
Kathleen Driscoll
Joseph and Joan Dulcey
Ken Elder
Rhonda Ellington-Center *
Kathleen Evanac
Michael Fabian
David Falchek
William and Deborah Fallin
Lynn Faust

\$1 - \$249

Zoila Feldman
Robert Fenton
Douglas Ferguson
Nancy Fermano
Lorraine Ferramosca
Sharon Fetherman
Eileen Ficalorra
Jolie Fierro
Peter Figetakis
Mary Flanigen
John and Dawn Forrest
Paola Frade
David Franduto
Michael Frantsen
Holly Friel
Dean Ftikas
Tanya Garcia
Marija Gau
Jerome Gavin
Heather Geer
Geoff George
Give Lively Foundation, Inc.
Barbara Glodek
Rosa Gonzalez
Maruxa Gonzalez
Ed and Donna Goscicki
Kevin and Dawn Greco
Allen and Christine Groh
Theresa Gruber
Esmeralda Gutierrez *
Jeffrey Hamilton
Julie Hansen +
Jamie Hansen
Mary Ann Harness
Barbara Harris
Danielle Hellick
Lauren Henderson
Mark and Maureen Hennessey
Ashley Heyne
Mike Hildoerfer +
Dan Hoey
John and Sally Holmboe
Larry and Suzanna Honeycutt
Brian Horvath
Christopher and Marcia Howe
Stephen Hoyle
Chuck and Terry Hughes
Ed and Kim Hunter
Virginia Hurley
Gloria Iommie
Intelligent Foundation
Steven Ivins
Priscilla Jensen
Maria Jimenez
Daryl Johnson
Jon Johnson
Pamela Johnson

\$1 - \$249

Wendy Johnson
Don and Ruby Johnston
Ky Jones
Rima Jubran
Scott Justus
Kim Kampf
Roberta Keefer
Mary Kennedy
Michael Kirchner
Wendy Klager
Robert Kocur
Patricia Kolb
Marjorie Koles
Kelly Kondra +
Janet Kreuer
Jillian Krill
Barry and Susan Krumm
Peyton Lagarde
John and Alice Lainhart
Larry Lam +
Martiza Lam Chu
Jerry and Eileen Larkin
Diane Lavery
Ho Yin Law
Kelvin Law
John A. Lawrence +
Leon and Virginia Lebo
Mary Leclerc
Heather Lee
Charles and Marcia Leeds
Pam Lessig
Rachel Levkowicz +
Paul Licata
Eric Lietzow
Susanna Lipovac
John Lipovac
Brad and Leanne Lisien
Penny Lloyd
Allison Loecke
Charles and Beth Longley
Susan Ludwig
Sandra Lurie
Janet Maguire
Despina Makredes
Apostolia Mamos
Terry Marks
Glenda Martin
Michiko Martin
Sandra Martin
John and Charlene Martinelli
Meredithe Mastrella
Rachel Mathisen
Cindy Mattson
Gregory J. Mazurek * +
Melanie McCabe
Taylor McCoy +
Gerry and Doug McDermond

\$1 - \$249

Jonathan McDonald
Jonathon and Allegra McFadden
Ann McKenzie
Michael McKinley
Regina McLenon
**Medtronics Foundation +
Corp. Trustee**
Susan Mellema
Martin and Peggy Michlik
Christopher and Shawn Miller *
Ellen Miller
Michael Minges
Susan Mobley
Karl and Bonnie Mollison
Paul Montagano
**Bart Montalti,
Creative Solutions, Inc. ***
Trisha Mortellaro
Peter Moy
Susan Mrakovcic-Kane
Sami Muro
Jessica Murphy
Bob and Karen Murray
David Murray
Jeanne Myers
Lisa Myers
Philip and Nancy Nader
Anthony and Esther Nardino
Kristen Nesensohn
Samuel Neumann *
Rachel Nicholls
Randy and Robert Norman
Jason Occhipinti
Sharon Olson
Lori Ordonez
Russ Osmonson
OWASA Retirees
Lynell Palitto
Elizabeth Palmer
Carl and Joanne Palumbo
Mittu Pannala +
Tamara Parker Buse
Dave Passarello
Riddhi Patel +
Brent and Terry Perry
Patricia Petko
Robert and Bernice Pine
Marilyn Pribbenow
David and Catherine Price
Julie Quarles
Ram Ram
Henry Randolph
Michael Rapalje
Teresa Ravia
Linda Reeves
Jacquie and Michael Resnick

\$1 - \$249

Amanda Restivo
Randall and Alison Richards
Gail Roberts
Jairo Rodriguez
Sandra Rodriguez
James Roosa
Donna Rubin
Stuart Rudnick
Anna Saavedra *
Donald Saelinger and Katherine Dube
Christina Salem-Roberts
Jenny Samples
Troy and Debbie Sanderfer
Jeffrey and Donna Scapardine
Melyssa Scarfo
Bruce and Wanda Schuller
Michael Scoba
Joseph M. Searle +
James and Gail Sergio
Mary Ellen Sestito
H. Jay Sexton
Snehal Shah +
Joseph and Karen Shoshana
Laurie Silverman
Jen Silvers
Elizabeth Singley
Brad Skinner
Pat and Doug Slusher

\$1 - \$249

Ann Smith
Terri Smith +
Marilyn Smith-Hall
Allison Smith-Terrey
Romil Sood +
Christine Spaight
Marilyn Spirer
Bob and Pam Stahl
**Trustee for Standard +
Insurance Corp.**
Curtis and Donna Stanke
Ebony Steward
Kurt and Margaret Straus
Debbie Strejc
Beth Sturdevant
Anna Sveinsdottir
Sandra Szymanski
Scott Szymczak +
Helen Tan
Rich and Linda Thompson
Gianni Tomassi
Rebecca Topley
Tiffany Torrey
Jenny Trettel
Carole Turner
Keith and Kathy Turner
**United Way of Dane County +
United Way of Massachusetts Bay and
Merrimack Valley +**

\$1 - \$249

**United Way of Saginaw County +
United Way Suncoast +**
Marcy Van Otegham
John and Tammy Vierra
Louise Vierra
Anica Vodinelic
Tim and Stacy Voisinet
Nicholas Volk
Christopher Waddell
Richard Weber
Melissa Wells
Joyce Wessel
Lynde White
Lindsay Wieker
Mary Wikoff
Rebecca Wilson
Vicki Wilson
Carol Winge
Katherine Wisener
Kathy Wisniewski
River Woosley
Bonnie Wright
John Wright
Molly Zangrilli
Margaret Zappelli
Gordon and Marie Zurn

+ Workplace Giving * Monthly Donor/Recurring Gift

Sustaining Impact. Month After Month.

Our recurring and workplace giving donors are the steady heartbeat of our mission. Your ongoing generosity provides the reliable support that allows us to plan boldly, respond quickly, and create lasting change. Thank you for standing with us and making this work possible every day.

Ted Cabel
Brian and Amy Cummings
Deanna Fournier
Jim and Leisa Greathouse
Rhonda Ellington-Center
Michael Freeman

Esmeralda Gutierrez
Henry 'Hank' Heren
Gregory J. Mazurek +
Christopher and Shawn Miller
Bart Montalti, Creative Solutions, Inc.
Samuel Neumann

Anna Saavedra
Alan Scolamieri and Misty Colwell
Jana Thomas
Holly Wicketts
Yuping Zeng

Powering Impact Through Workplace Giving

Ronnel Balliet
Pamela Bishop
Tamara Bothwell
Kelsey Cheek
James Erbele
Jessica Franco
Brian Gillin
Julie Hansen
Jessica Hemond
Mike Hilldoerfer

Kelly Kondra
Pam Kurtz
Larry Lam
John Lawrence
Rachel Levkowicz
Gregory J. Mazurek *
Taylor McCoy
Terrence Nesensohn
Mittu Pannala
Riddhi Patel

Jamie Rivette
Joseph Searle
Snehal Shah
Bridget Shingler
Terri Smith
Romil Sood
Scott Szymczak
Maria Watson
Alaska Airlines ^
AT&T Employee Giving ^

The Clorox Company Foundation ^
Medtronics Foundation ^
Percent Impact Foundation ^
Standard Insurance Corporation ^
Thrivent Financial for Lutheran's Foundation ^
United Way of Dane County ^
United Way of Gloucester County ^
United Way of Massachusetts Bay and ^
Merrimack Valley
United Way of Saginaw County ^
United Way of Suncoast ^

We are deeply grateful to the incredible community members who opened their hearts and hosted fundraisers in support of our mission. Your leadership, generosity, and commitment brought people together and turned passion into meaningful impact.

To every donor and participant who showed up, gave generously, and helped spread the word - thank you. Your support fuels our work and strengthens the community we are building together. This impact is only possible because of you.

Anna Memorial Golf Tournament

Hosted by Bjorn Olsson and Karin VanSickle

Donald Albracht
Carol Allen
Richard Arnould
Jeffrey Baker
Peter Bengtsson
John Boynton
Donald Bradford
Diane Bye
The Cleaning Authority
Jean Cook
Kevin Cosentino
David and Margaret Creek
Bruce Cutler
Robert Degen
Gregory Drown
Enviromow Landscape Co.
Feller Family Charitable Foundation
William and Virginia Fellows
David Forer
Linda French
Charles Gause
Stephen Georgian
Erin Gomer
Arch Gothard
David Graham
John Gritti
Timothy Guise
David and Nancy Gurney
Lennart Hammargren
Steve Hardin
Robert Harmon
Michael and Marlys Haverty
Family Foundation
John and Deborah Holland
Iglewski Family Foundation
Robert Jester
Hans and Barbara Johansson
Lloyd Kaiser
Deedee King
Tom Landsberg
Donald Lee
David Lewis
Brian Lisankie



Anna Memorial Golf Tournament

Douglass List
Howard Marshall
Judi McKenna
Michael and Deanna Mrachek
Barbara Mulka
James Olson
Bjorn and Cecilia Olsson
Inger Olsson
David Orr
Rickard Ovin
Darren Phillips
Stan Powers
Reintjes & Hiter Co, Inc
Brentand Tina Reintjes
Andy Rieger
Doug Rinas
David Rizi
Raymond and Kaisu Rosewall
The Salon
James Sauer
William Scheerer
Stephen Schmitz
Staci Schottman
Scott Selock
Harold Shaffer
Vaughn and Julia Short
Ann Marie Sprotte
Tim and Shawna Stout
Conner Teahan
Stephen Tibbets
Roger Triftshauser
Herbert and Susan Trucksess
Mark Turner
Larry VanSickle
Linda VanSickle
Nathan and Karin VanSickle
Mario Verna
Ellen Vieyra
Martha Waits
Harry Waters
Travis Whitacre
Kent Whittaker
William Wiley
Robert and Claudia Wolf

Breathe and Believe Wellness Event

Hosted by Dena Cavazos

Anabel Aguirre
Barry and Melinda Atnip
Ranee Barak
Dena Cavazos
Jennifer Shupper
Karolyne Stokely
Ana Valdez
Karina Valdez



Histio Blue Ribbon Run

Hosted by Histiocytosis Association Team

Barbara Adams
Marina Allensworth
Katherine Arnold
Barry and Melinda Atnip
Bradley Atnip
Richard and Priscilla Atnip
Rachel Balderrama
Ashley Bergman
Blake Bergman
Dominique Bokor
Brandbliss
Tracy Brown
Torr Brush
Jennifer Bustos
Jennifer Byerly
Christian and Michele Carpenter
Avery Cavazos
Dena Cavazos
Chris and Nick Cimino
Laura Clark
Coloradoscapes.Com Inc
Cheryl Cressey
Joe and Tammi Cummings
Carole Cummings
Miriam Di John
Jamie Dillenbeck
Tracey Dixon
Cathy Doyle
Erica Dyer
Ann Fick
Amy Fox-Bartley
Rebecca Friedel



Histio Blue Ribbon Run

Hosted by Histiocytosis Association Team

Cal Fuss
Alyssa Gallardo
Marcella Garza
Adam Harsma
Danielle Hellick
Elijah and Erika Hernandez
Monica Hornbostel
Mark Irwin
Oksana Kazmirchuk
Abigail Kirschenmann
Amanda Kirschenmann
Gary and Tiffany Kirschenmann
Darlene Lamb
Larry Ledom
Betsy Long
Abigail Maffey
Amber Magdaleno
David Maldonado
Ave Mansheim
Bradley and Tracy Martin
Carol McGrath
Betsi and Juliette Mendez
Linda Miller
Robyn Miller
Tim Morder
Keegan Moore
Akira and Mami Morimoto
Terrence and Kristen Nesensohn
Gerri Nesensohn
Jay Parker
Anna Paulino
Jennifer Picarsic
Danielle Pienaar
Debbie Pienaar
Bonnie Platt
Sandi Quigley
Melissa Read
Cara Reinig
Liliana Rodriguez
Rebecca Rodriguez
Mark and Robin Ross
Dustin Ruppert
Robert Shutts
Julia Sifuentes
Salvador Sifuentes
Jen Silvers
Kayla Stanley
Susan Tafoya
Ana Valdez
Joshua Vojtisek
The Watering Can
Rita Whiteford
Carly Whitney
Christie Williamson
Elaine Wimler
Kathy Wisniewski
Peter Yanefski
Dmytro Yarmoliuk



Histio Hike Shenandoah

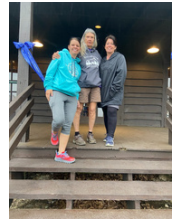
Hosted by Ryan, Tracy and Ian Brown

Gwyn Adkins
Marcela Aguilar
Trisha Aquintey
Miranda Argona
Ivan Argueta
Melinda Atnip
Tina Aupperle
Melinda Atnip
Justin Babuscio
Mary Bachli
Anna Badurik
Wendy Banga
Erin Barker
George Barr
Caren Barrere
Kristen Battisti
Genevieve Bauer
Lara Baumheier
Mary Jessica Beard
Eileen Belcher
Joseph Belcher
Sandra Beneventi
Sarah Beraha
Jack and Delaine Berry
Ryan Berry
Sean Berry
Jeffrey Birkel
Betty Bittle
Dana Bloom
Sandra Borlie
Deanne Bowers
Michele Bowers
Samantha Boyd
Casey Briceland
Sidney Brooks
Eric Brown
Ryan, Tracy and Ian Brown
Jennifer Buchanan
Nancy Burrier
Kara Calvert
Stacey Camp
Jill Catlett
Amy Cavallini
Meghan Cesario
Teo Coffman Chacon
Jane Chamberlain
Chloe Clanor
Diana Clanor
Mario and Teodora Clanor
Penelope Clanor
Lisa Clark
Cory Coffman
Laurie Hays Coffman
Richard Coladarci
Chad Collie
Toby Cooper
Matthew Cooper
Matthew Corcoran



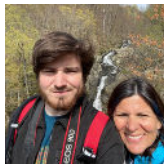
Histio Hike Shenandoah

Laurie Costa
Jason and Kristine Couden
Kirsten Crase
Joanne Cryer
Tommy Cudmore
Wilbert Cusano
Mary Dare
Michelle DelMedico
Susan Devaney
Tracy Diehl
Alex Dionis
Wynona Douglas
Christopher Elder
Ryan Elliott
William Embry
Valerie Felicetti
Raymonde Ferguson
Kulani Fernandez
Barbara Fillion
Katherine Fogel
Katherine Fontana
John and Dawn Forrest
Debra Frenchman
Alex Frye
Wesley and Alena Fuhrman
Kathryn Fulcher
Rachael Galey
Marconi Gapas
Julianna Garcia
Valeria Garcia-Tufro
Donna Gass
Theresa Gilbert
Hans and Meghan Godfrey
Barbara Greene
Jane Griffith
Daniel Guelich
Adam Guise
Joseph Hartwich
Meghan Hatch
Mindy Hatt
Jill Hart
Laurel Hauf
Robert Hazard
Charles Heren
Dieter Heren
Heather Heren
Henry 'Hank' Heren
Pamela Heren
Sharon Heren
Luchen Hockaday
Kristen Hodsdon
Suzanne Hoh
Shawn Hoyt
Andi Hughes
Sara Hughes
Henry and Jane Hurst
Lincoln Hutson
Nancy Hwang



Histio Hike Shenandoah

General Dynamics
Information Technology
Samuel and Kim Jacobs
Richard Jacques
William and Irene Jenkins
Mike and Marie Jun
Denae Junker
Gloria Kaplan
Hagop Kassabian
Chris Keefer
Marcee Keefer
Sara Kent
Chris Kerlish
John Kerlish
Norm Kievit
Blake Kimbrough
Daneen Kincaid
Cathryn Klein
Lisa Klink
Aimee Kozick
James Kraiman
Dawn Kretz
Eddie Lackey
Gayle Lake
Larry and Karen Lam
Vickie Lamb
Kayla Lamp
Kimberly Lau and Cooper Bolt
KP Lau
Stephanie Lenane
Chad Legros
Cara Lewis
Kerry Lewis
Cathy Lindenberg
Timothy Link
Brittany Linstrom
Lucette Lohnes
Michael Longfellow
Duncan Mara
Tracy and Jim Mara
Gabriela Maradiaga
Liz Marriott
Catherine Martin
Karen Masercola
Lori Matthews
Helen Matusow-Ayres
Thomas and Stacey Maurer
Connor McBride
Ginger McCarthy
Suzanne McCloskey
Sharon McCullough
Nicole McDonald
Cara McFadden
Jon and Allie McFadden and Family
Louise McFadden
Shane McGee
Kurt McLucas
Chris McNicol
Sean and Michelle Meadows



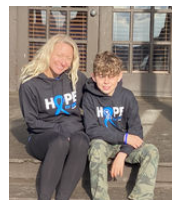
Histio Hike Shenandoah

Avery Meetre
Deborah Meetre
Doreen Menary
Donna Michaud
Kenneth Miller
Neely Miller
Karen Mitchell
Molly Mitchell
Barb Mondy
Bart and Nancy Montalti
Colby Montgomery
Katie Moore
Richard Moran
Tim Morder
Cathy Morrow
Dennis and Barbara Mowry
Dave Mowry
Patti Mynio
Bharath Nath
Sheryl Neild
Lindsey Newingham
Kathryn Oetzel
Mary Parker
Wayne Parrington
Brent Patrick
Paula Pavlova
Andrew Pelletz
Laken Pendergast
Ryan Pfoutz
Anthony Pizzuti
Gladys Pluskey
Diane Prentice
Keith Pressey
Kristen Puckett
Shelly Purchis
Phyllis Ranson
Linda Redding
Christina Reed
Beth Reeves
Patrick Reiser
Michele Ridnour
Denise Rivera
Jesus Rivera
Laura Roberts
Deirdre Rodriguez
Bill Rogers
Denise Romero
Mac Rosenbaum
Judith Roth
Linda Roth
Scott and Laurie Ryan
Arthur Sauerland
Becca Scaife
Geraldine Scarpa
Kelly Schapmire
Renee Schiefer
Catherine Schlawin
Michael Schroeder
Pete Schumachet



Histio Hike Shenandoah

Ray and Susan Schwarten
Dan Servello
Patricia Shock
Katie Sinphay
Shermin Sirajudin
Matthew and Lysa Slagle
Talia Smith
Thomas Smith
Ryan Soifer
April Spangler
Katherine Sparrow
Brooke Stammersky
Vicki Stanishefski
Judy Stechman
Robert Stewart
Matt Stiffler
Michael Stills
Rebecca Stryker
Debra Surratt
Claudia Svarstad
Doug Sweitzer
Danielle Swisher
Rhonda Sykes
Matthew Tamisin
Heather Tancredi
Trenton and Mary-Elizabeth Tebbe
Karen Tester
Joseph Thomas
James and Kathleen Thomas
Mary Thompson
Patti Thompson
Cory Tomaszewski
Samantha Tomaszewski
Megan Tracey
Lori Turner
Daysha Vance
Praveen Venkatachalam
Brannan Vilee
Brian Walls
Kent Walter
Chester and Barbara Ward
James Weidman
Kristen Whitmore
Becky Willard
R Witherup
Robert Woods
Gregory Zeter
Vanessa Zimmerlee



Histio Run In Memory of Jeffrey White Hosted by Angi White

Erin Carley
Sherman Faulkner
Stephen Fox
Pippin Gormley
Kerri Gray
Sandra Harger
Tabitha Horton

Histio Run
In Memory of Jeffrey White
 Hosted by Angi White

Rebecca Morris
 Mannford Little Pirates and Head Start
 Abby Potts
 Advance Boiler Repair and Service, Inc.
 Isaac Stowe
 Sandra Thomason
 Ashley Whisenhunt
 Angi White
 Karen White
 Winn's Cafe & Grill
 Chris Wolford



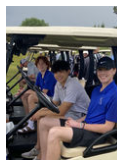
HLH Awareness
Charity Golf Outing
 Hosted by Mark and Robin Ross

Tom Adkins
 Fred Arthur
 Atnip & Co.
 Andrew Benigna
 Dolores Boccarossa
 Brian Bunton
 Dave Canedo
 Cynthia Carmody
 Jeff Clatterbaugh
 Alberici Constructors
 Tod Copacia
 DBC America
 Judy Dean
 Thomas DeBruyne
 Paul Denski
 Joan DiLaura
 Ken DiLaura
 Sharon Dizez
 Sibylle Duda
 Kent Gartside
 Brian Gossard
 Grunwell-Cashero
 Rick Hall
 Jennifer and Peter Harris
 Nathan Jarbou
 Thomas Jaskowic
 Brittany Johnson
 The Joe and Pamela Kay Foundation
 Michael Kluck
 Ekaterine Komova
 Craig Kozicki
 Diane Krzyaniak
 John Landerschier
 Mike Mason
 Sam Mazur - Cosmic Freeze
 Briana Mosley
 Jason Moul
 Robert Nunnally
 Dave Olsen
 Vince Pusateri
 Ryan Rittenhouse
 Gerald Ross
 Hugh Ross
 Mark and Robin Ross
 Heather Scirri
 Daniel Shular
 Sandra St Onge
 Jason Steinert
 Bob Sutton
 Troy Timko



HLH Awareness
Charity Golf Outing

John Treharne
 Ken Tyszkiewicz
 Richard Variot
 David Vassar
 Tito's Vodka
 Nicole Williamson
 Cindy and Dave Williamson
 Jeanine Williamson
 Josh Wilson
 Marie Wilson - Fireball
 Yellowstone Bourbon
 Mary Zigman
 Barb Zinkosky



Play for a Cure
Softball Tournament
 Hosted by Dan Potter

Courtney Dorsey
 Logix Federal Credit Union
 Quality Health Services Corporation
 Dan Potter
 Rossi Law Group



Ty Fighter 5K
 Hosted by Michelle Meadows

Amelia Abraham
 Sophia Abraham
 Amy Boehl
 Ryan and Tracy Brown
 Yudhie Brownson
 Vivian Bui
 John Burke
 Johanna Callands
 Teodora Rowena Clanor
 Kimberly Cook
 Stephanie Cornejo
 Israel Davila
 Scott Dennis
 Scott Deshaies
 Danielle Furlich
 Abdirazak Hamud
 Vickie Hunter
 Monica Jaramillo
 Vanessa Jaramillo
 Aimee Kozick
 Ryann and Kevin Laden and Family
 Diane Lank
 Light of the World Academy
 Michael Mahr
 Thomas McFarland
 Pam McKinley
 Sean, Michelle, and Ty Meadows
 Kinda Mines
 Kinda Mines
 Diane Newkirk
 Grace Oestenstad
 Vineeta Panwalkar
 Jessica Previti
 Patricia Rosend
 Sarah Roth
 Katherine Seay
 Carey Seery
 Kaia Sgorcea
 Jen Silvers



Ty Fighters 5K

Lexi Smith
 William Truskey
 Zane Ubieta
 Sara Winterling



Team Histio DIY Events

Barb Adams
 Melinda Atnip
 Fan Bai
 Mark Balinski
 Amanda Berry
 Jason and Carrie Blazen
 Anne Marie Bonardelli
 Jennifer Brewer
 Copybrighters LLC
 Kristina Couden
 Lisvette Cuevas-Cruz
 Nicole Curran
 Valerie Diaz
 Cathy Doyle
 Alyssa Drouillard
 Joyce Engberg
 Kristy Fischer
 Anne Goldring
 Richelle Greene
 Julianne Hoffa
 Chanille Hume
 Carol Kim
 Chelse Krohn
 Michelle Kruse
 Tammy Krystia
 Jamie Lafleur
 Janet Laudenbach
 Jill Laudenbach
 Kari Laudenbach
 Mark and Cindy Laudenbach
 Maria Leanos
 Mary Leclerc
 Lynnae Lynch
 Ellen McAllister
 Allie McFadden
 Ashlea McGuire
 Flori Meeks
 Amy Morales Knight
 Jodi Morgan
 Jim Nordmeyer
 Beth Oneill
 Robert and Kathi Pepper
 Kathryn Robotceck
 Joan Spadaro
 Chad and Kristy Rubin
 Deborah Sartor
 Mike Schultz
 Becky Smith
 Julie Smith
 Judith Smith
 Anne Space
 Lisa Spadaro
 Michael Spadaro
 Taylor Speaks
 Angie and Torrie Thuli
 Laurie Waguespack
 Martin Walkow
 Linda Wallace
 Tatum Yammin
 Michael Zika



Board of Trustees

Officers

Tracy Brown
Chairwoman

Kelsey Cheek
Treasurer

Kimo Stine, MD
Secretary

Board Members

Eli Diamond, MD

Jasmine Francis, MD

James Hassan, Esq.

Rima Jubran, MD

Stephan Ladisch, MD

Chad Rubin

Sydney Martin Rutstein

Staff

Jen Silvers
Executive Director

Kristen Nesensohn
Chief Program & Development Officer

Danielle Hellick
Chief Financial Officer

Kathy Wisniewski
Histiocyte Society Secretariat

Peter Yanefski
Communication and Operations Coordinator

Erica Dyer
Database/Compliance Coordinator

Melinda Atnip
Program and Outreach Coordinator

Allie McFadden
Fundraising/Patient Advocacy Coordinator